



PUBLIC SERVICE
DEVELOPMENT AGENCY



Ministry of
Justice of
Georgia

Georgian State Commission on Migration Issues

SCMI Secretariat

How to Improve Intra-European Mobility and Circular Migration?
Fostering Diaspora Engagement
Rīga, 11-12 May 2015

Anna Goos

Relevance of migration for Georgia

- Emigration **stocks**: 6-25% / **flows**: ~ 95.000
- **Remittances**: ~ USD 1.5 bio
- **inflows** ~ 92.000
- **foreign-born** : 190.000 Russians, Azerbaijanis, Armenians, Ukrainians, Kazakhs, Belarussians, Chinese, Turks, Indians
- **IDPs**: 224.000 (2014)



PUBLIC SERVICE
DEVELOPMENT AGENCY



Ministry of
Justice of
Georgia

Georgia – approach to migration

- 2009 EU Mobility Partnership
- 2010 SCMI
- 2013-15 Migration Strategy; 2016 -2020
- 2012/13 EU-Visa Dialogue / VLAP
- 2014 Association Agreement



PUBLIC SERVICE
DEVELOPMENT AGENCY



Ministry of
Justice of
Georgia

Georgia – approach to migration: coherence – coordination – cooperation

State Commission on Migration Issues

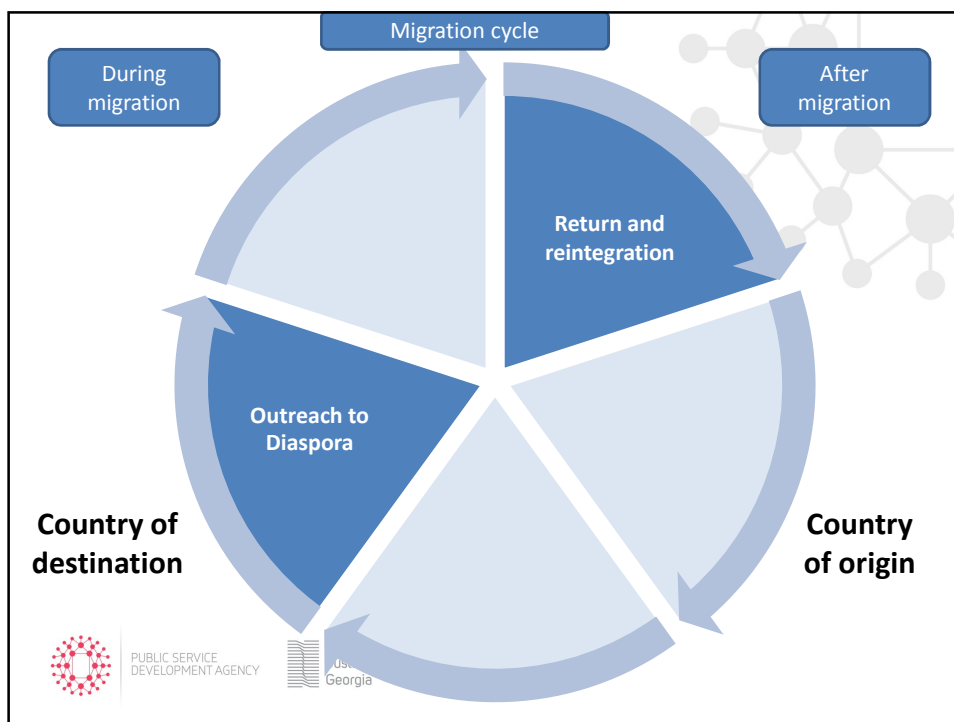
- 12 State Agencies – chair: Ministry of Justice
- 8 International Organizations
- 5 NGOs
- 5 Working Groups
- Secretariat / PSDA (2012)



PUBLIC SERVICE
DEVELOPMENT AGENCY



Ministry of
Justice of
Georgia



Georgia – approach to migration Office of the State Minister for Diaspora Issues

Current & upcoming outreach & networking

- **Main tool: Diaspora organizations**
- Annual Professional Forums / conferences
- Global Diaspora Week 13-14 October (IdEA)
- Diaspora web portal [www. Tanamemamule.ge](http://www.Tanamemamule.ge)
- Summer Camp, Online School, Internship
- Compatriot Certificate

Georgia – approach to migration:
 Ministry of IDP from the Occupied Territories,
 Accommodation and Refugees

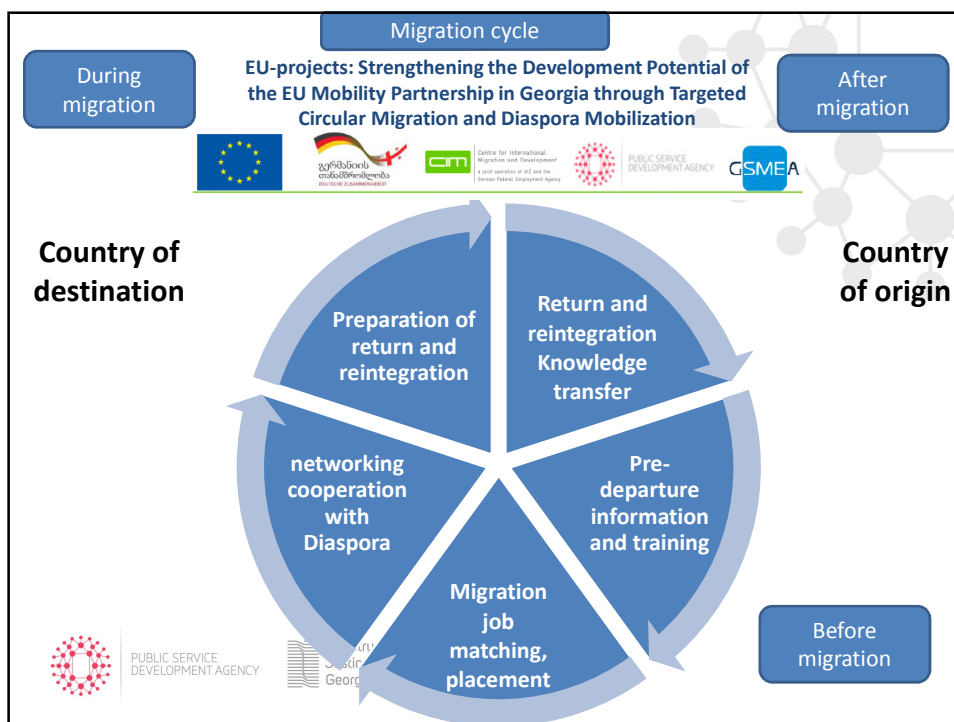
Advisory & Grants:

Mobility Centres (IOM) /Grants project (6 NGO) /

– state budget 2015: GEL 400.000 ,- (VLAP)

- small business, self-employment, professional training
- financing medical treatment and medications, lodging and household,

Info campaigns: opportunities of legal migration, risks of illegal migration, reintegration support



Relevance of international cooperation

mobility – when properly managed: overall positive effect – “triple win”

- human & qualification development
- prevention of (permanent) skilled labour drain
- reduction of irregular migration
- authorised, non-wage dumping qualified labour migrants;
- Cooperation : favourable partner country BLA
- capacity building on both ends of the migration management
- Circularity enhanced by multiple entry opportunities



PUBLIC SERVICE
DEVELOPMENT AGENCY



Ministry of
Justice of
Georgia

THANK YOU

www.sda.gov.ge

www.migration.commission.ge